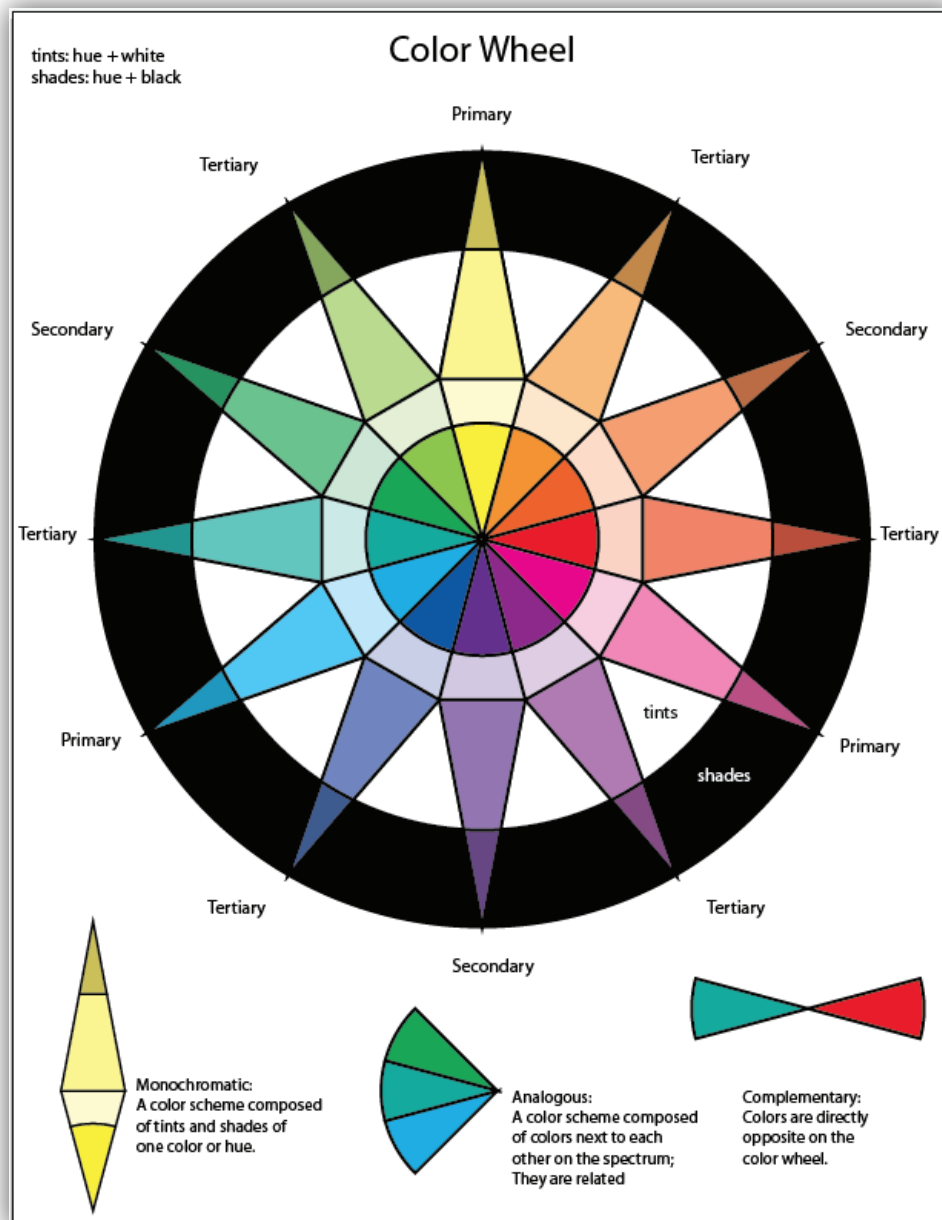


Color Wheel - Color Swatches - Part 3

Tints, Shades, Monochromatic, Analogous and Complementary..

1. Continue to work with the Color Wheel basic CMYK color spectrum and swatches you just constructed. This handout will guide you through creating the Tints, Shades, Monochromatic, Analogous and Complementary color scheme swatches and color groups.

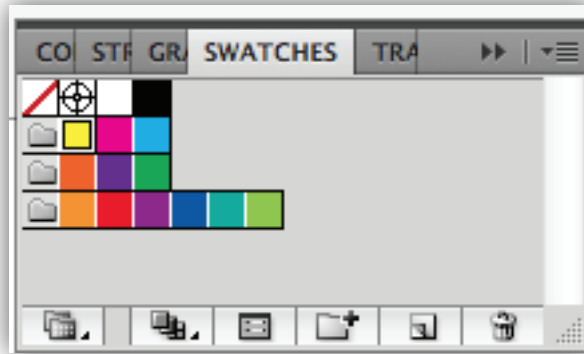
At the end of Part 3 you will complete the CMYK color spectrum color wheel. You will know your way around the Color Panel, the Color Guide and the Swatch Panel . You will also have created your own library of Primary, Secondary, Tertiary hues. As well as Tints and Shades of each color along with examples of Monochromatic, Analogous and Complementary color scheme Swatch Library for each color.



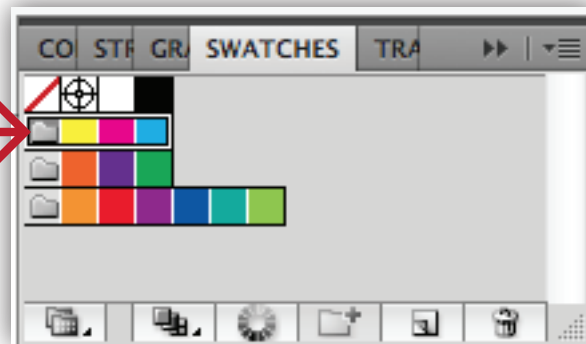
Color Wheel - Color Swatches - Part 3

Tints, Shades, Monochromatic, Analogous and Complementary..

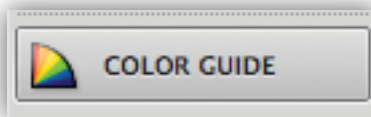
3. Open the Swatch Panel if it isn't open. It should be nested in the panels at right ; if not as with ALL panels it can be accessed via Window>Swatches. Click to open the panel up.



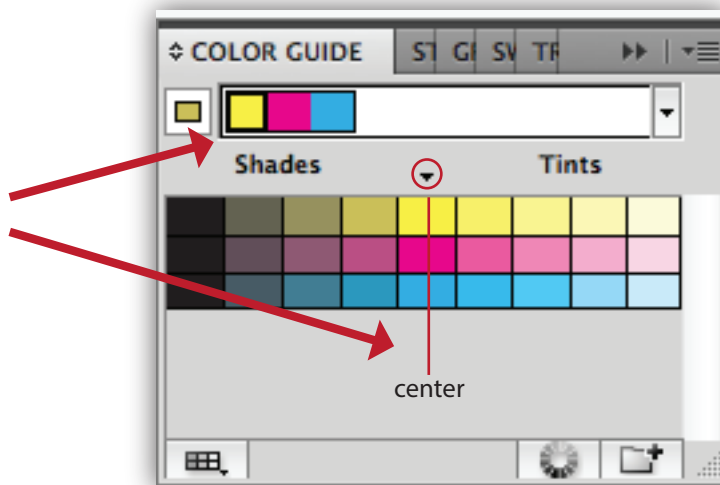
4. Select the folder icon for the Primary Swatches.



5. Open the Color Guide Panel. You will use this Panel to create the Tints and Shades for each Color Group.



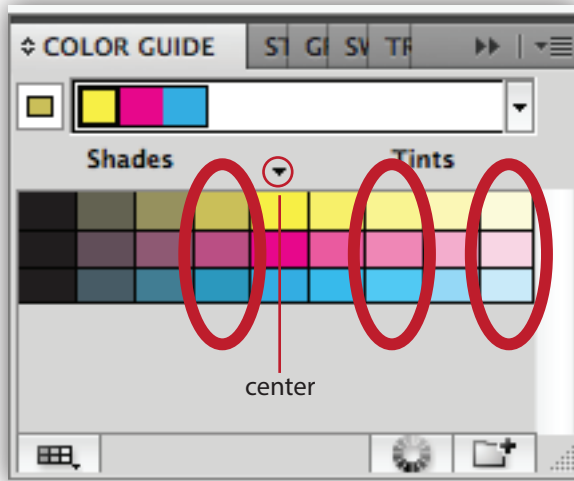
The center colors represents the base colors selected.



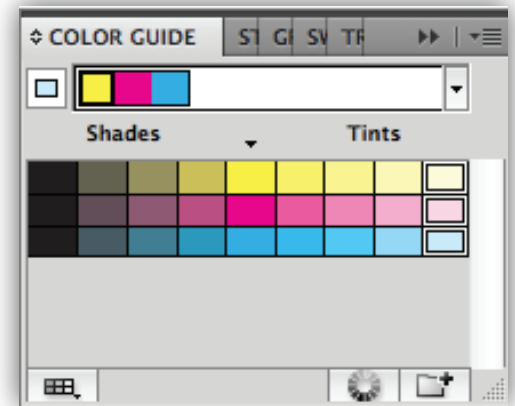
Color Wheel - Color Swatches - Part 3

Tints, Shades, Monochromatic, Analogous and Complementary..

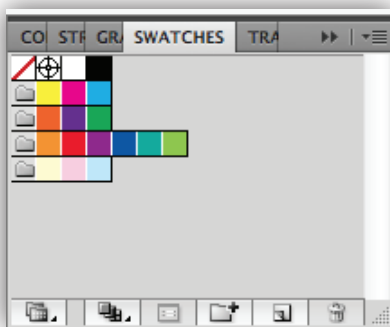
6. On the Color Guide you can see that the “tints” are right of center, while the “shades” are left of the center. The center colors represents the base colors selected. You will create a Color Group for a 10% Tint, a 30% Tint and a 10% Shade for each color group - Primary, Secondary and Tertiary.



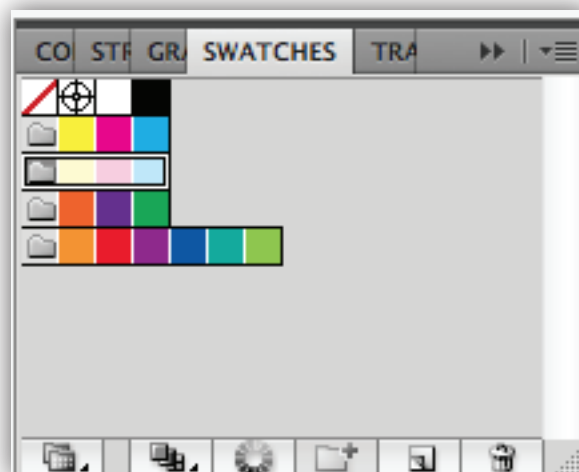
7. Create those tints and shades swatches as follows: Select the 10% Tint Group > then the “create new group” icon.



8. Click back to your Swatches Panel to see your new 10% tint color group.



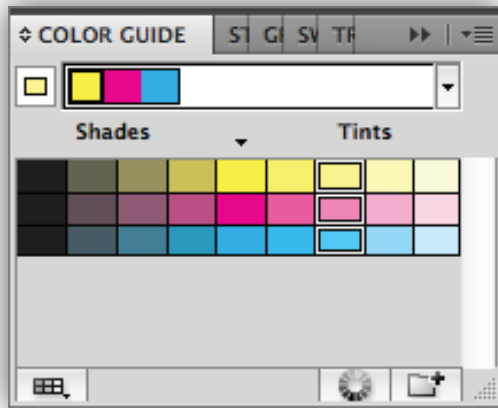
9. Organize the groups together. Select that color group and move it up beneath the Primary color group



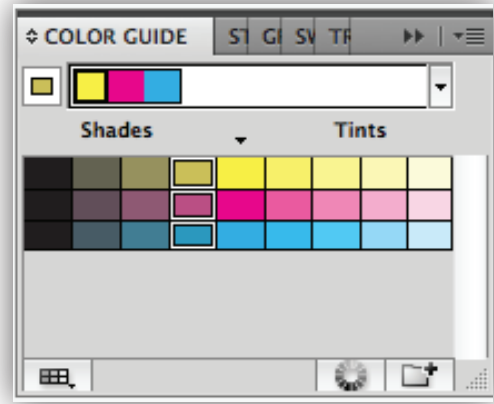
Color Wheel - Color Swatches - Part 3

Tints, Shades, Monochromatic, Analogous and Complementary..

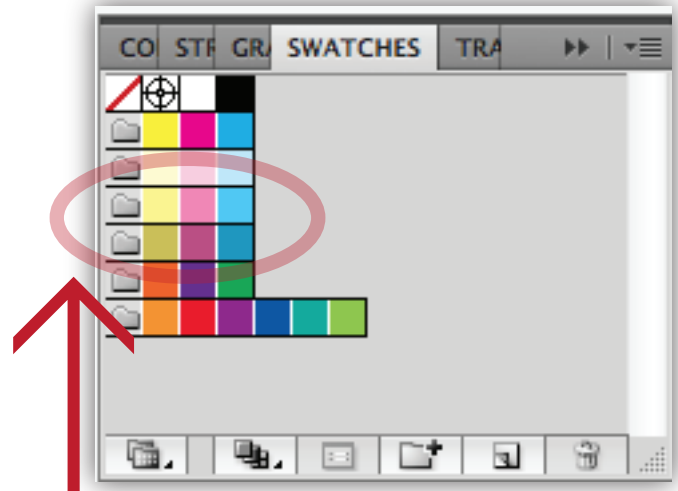
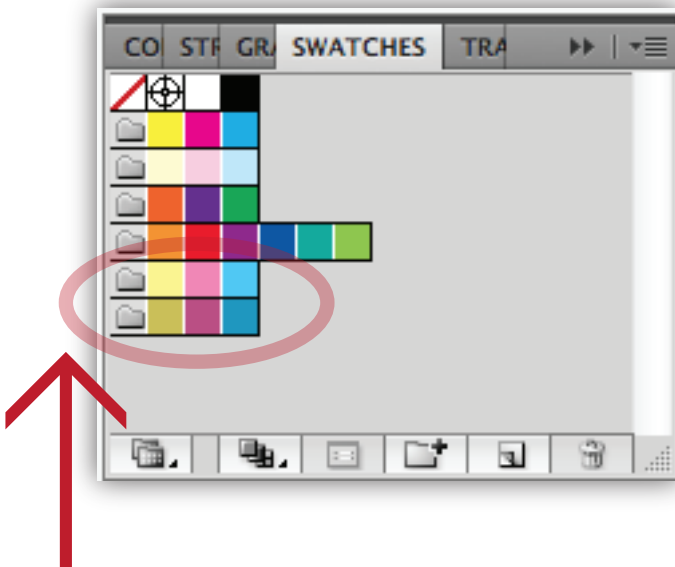
10. Follow the same steps to create the swatches for the #30 Tint,...



and the 10% Shade.



11. Now goto your Swatch Panel; just as before rearrange the 30% tint and the 10% shade beneath the Primary Color group so they are all together. Click the file folder icon and drag them up under the primary color group.



Don't forget to save your work regularly.

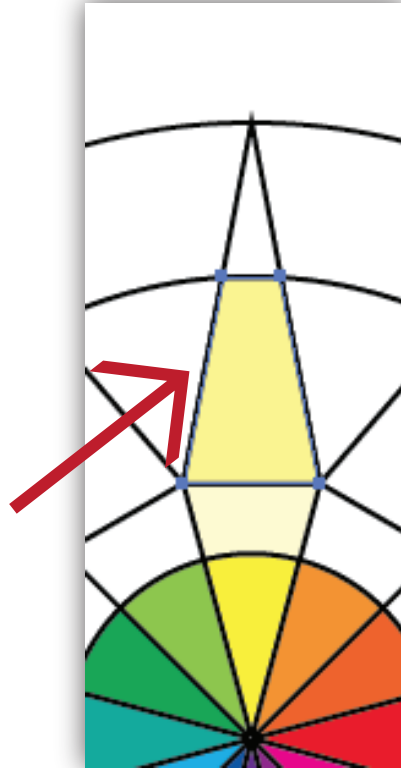
Color Wheel - Color Swatches - Part 3

Tints, Shades, Monochromatic, Analogous and Complementary..

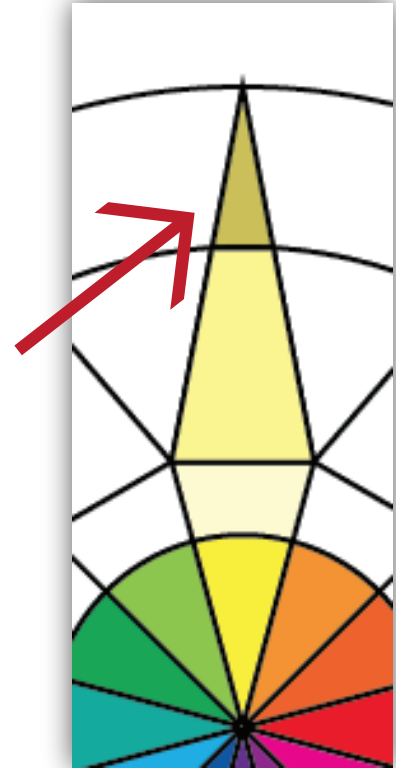
12. On your Color Wheel; Use the Direct Selection Tool (a) to select the shape above the Yellow pie wedge. Fill with the yellow 10% tint.



12b. Use the Direct Selection Tool (a) to select the next shape above and Fill with the yellow 30% tint.

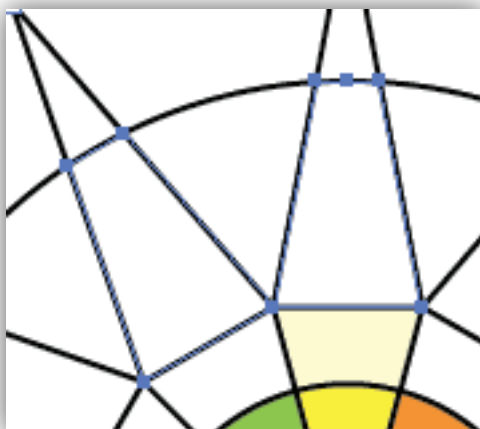


12c. Again, use the Direct Selection Tool (a), select the next shape above and this time Fill with the yellow 10% shade.

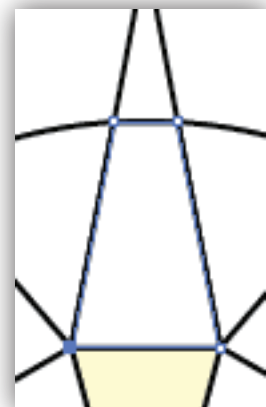


13. These represent the Tints (hue + white) and the Shades (hue + black) of yellow. Continue in this manner for all your colors.

14. Please NOTE: At times more than one will highlight because they may not have divided properly.



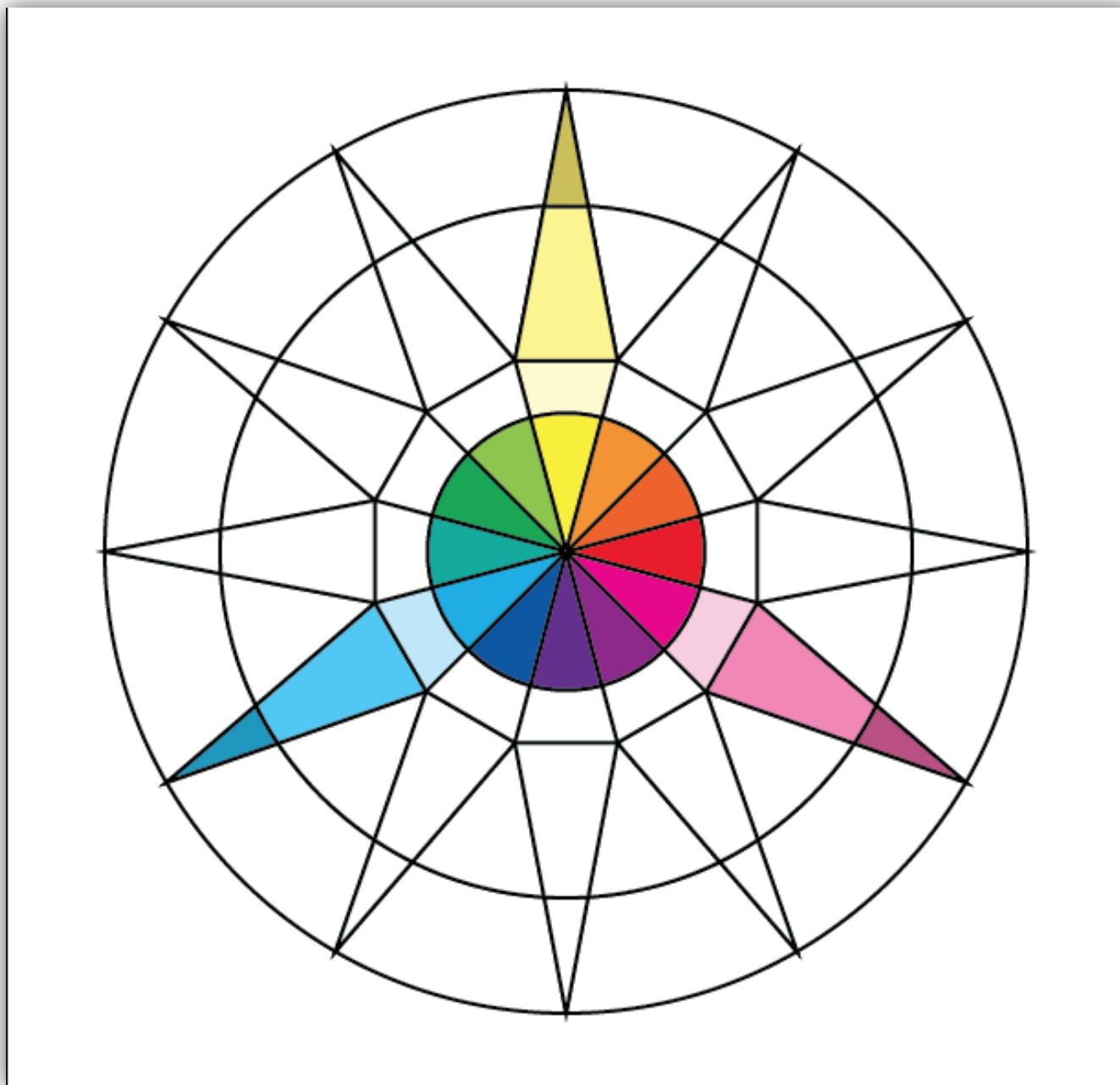
15. No worries there is a "work-around". Just use the Pen Tool (p) with a White Fill Black Stroke to trace around that shape. Then continue filling with your color swatches.



Color Wheel - Color Swatches - Part 3

Tints, Shades, Monochromatic, Analogous and Complementary..

16. Continue Filling your Color Wheel with the Tints and Shades from your Color Swatches Panel for Magenta and Cyan. Work through steps 12a - 12c for Magenta and Cyan.



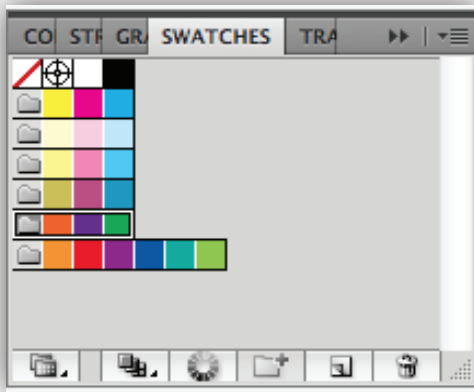
Don't forget to save your work regularly.

Color Wheel - Color Swatches - Part 3

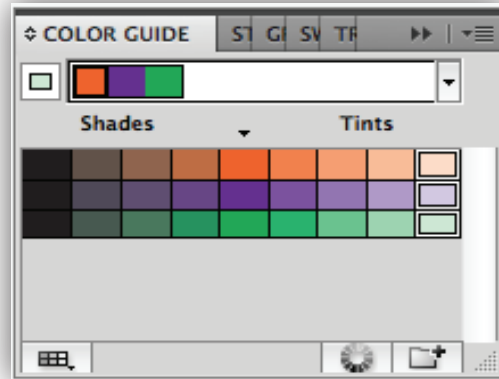
Tints, Shades, Monochromatic, Analogous and Complementary..

17. Now for the Secondary colors. Work through steps 4 - 11 for your Secondary Colors.

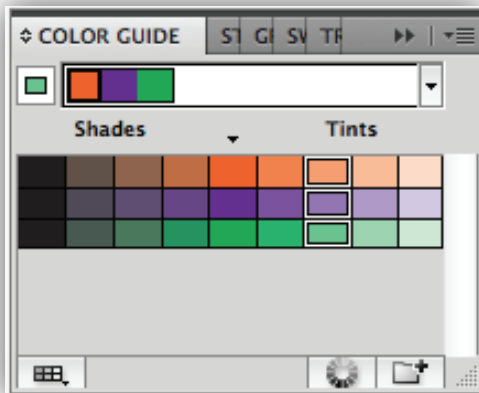
Select the Secondary Color Group.



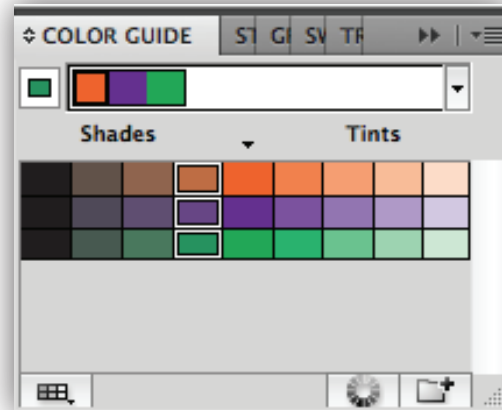
Open the Color Guide; Select the 10% Tint then the "add color group".



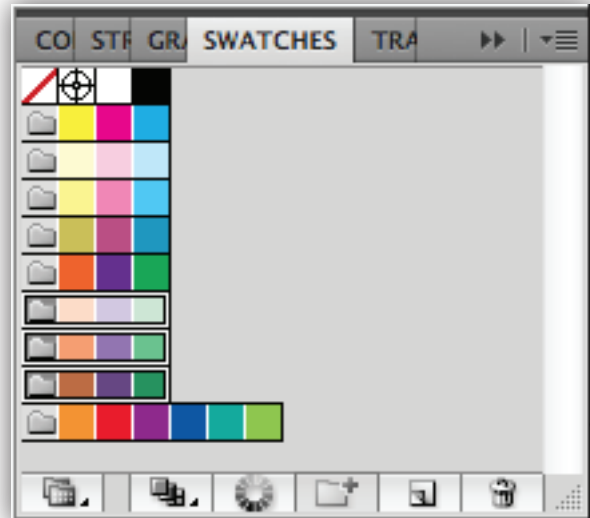
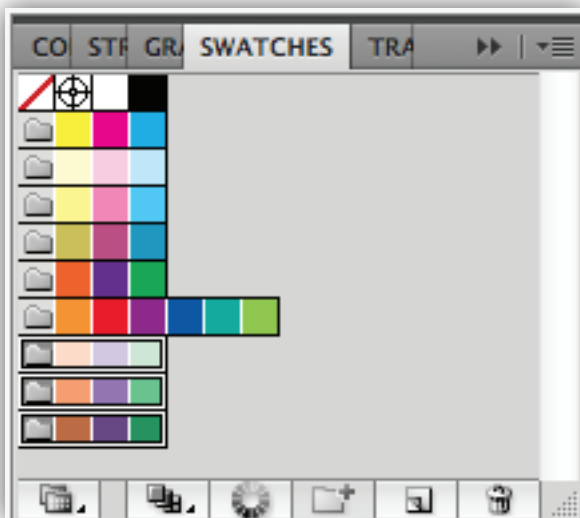
Now Select the 30% Tint then the "add color group".



Select the 10% Shade then the "add color group".



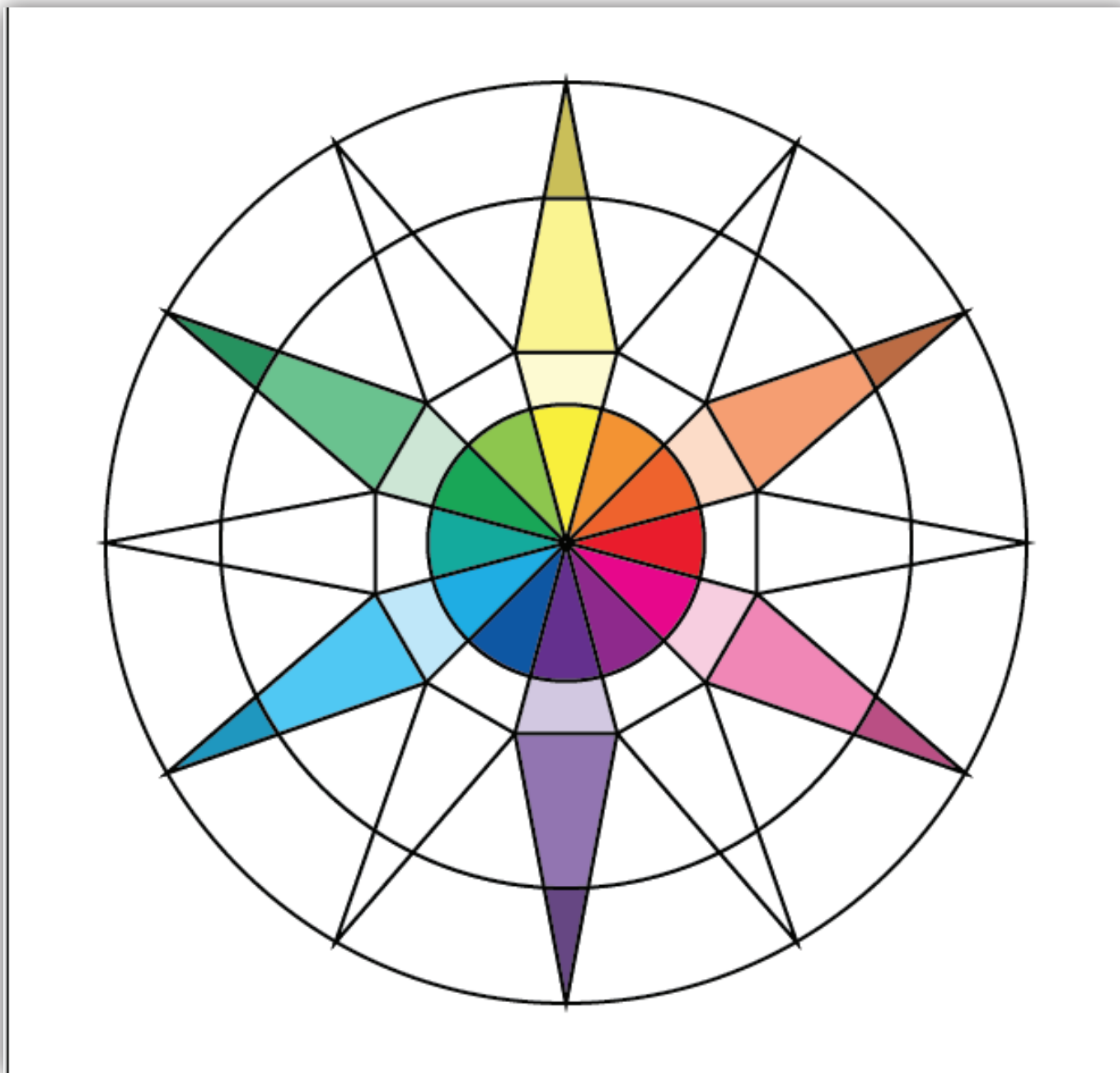
18. Rearrange your Swatch panel so the Tints and Shades of the Secondary color group are organized together as below.



Color Wheel - Color Swatches - Part 3

Tints, Shades, Monochromatic, Analogous and Complementary..

19. Update your Color Wheel with the Secondary tints and shades as shown below. Follow the steps in 12a, 12b and 12c.



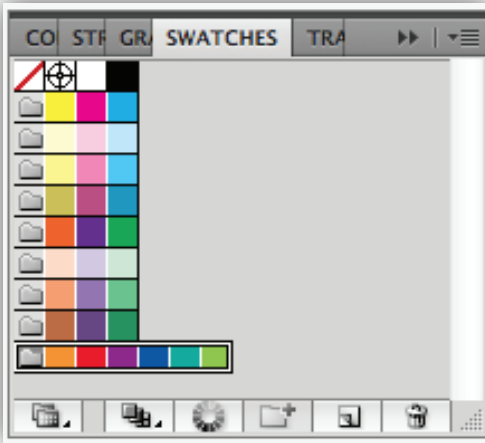
Don't forget to save your work regularly.

Color Wheel - Color Swatches - Part 3

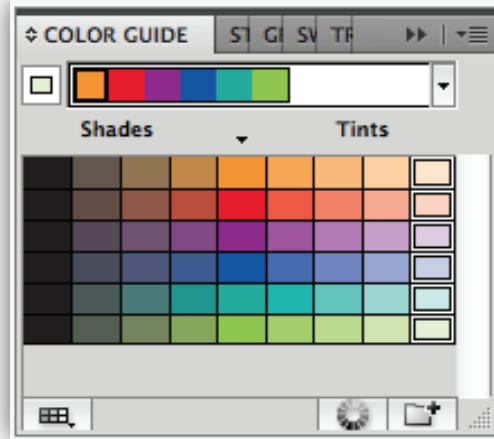
Tints, Shades, Monochromatic, Analogous and Complementary..

20. Now repeat steps 4 - 11 for the Tertiary tints and shades.

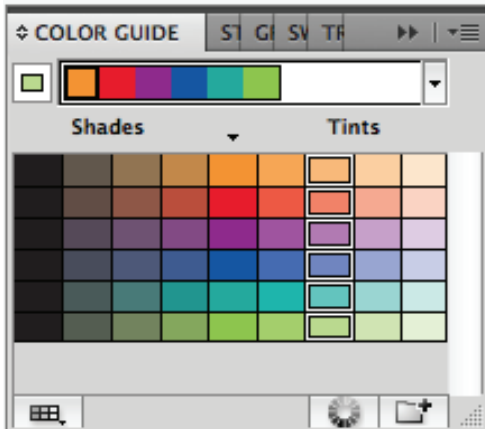
Select the Tertiary Color Group.



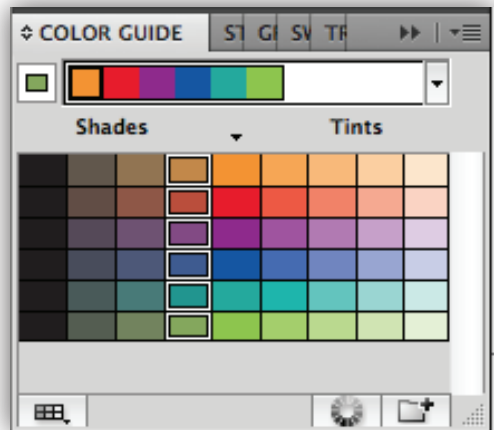
Open the Color Guide; Select the 10% Tint then the "add color group".



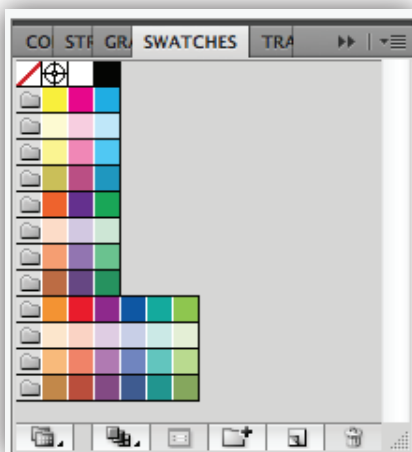
Now Select the 30% Tint then the "add color group".



Select the 10% Shade then the "add color group".



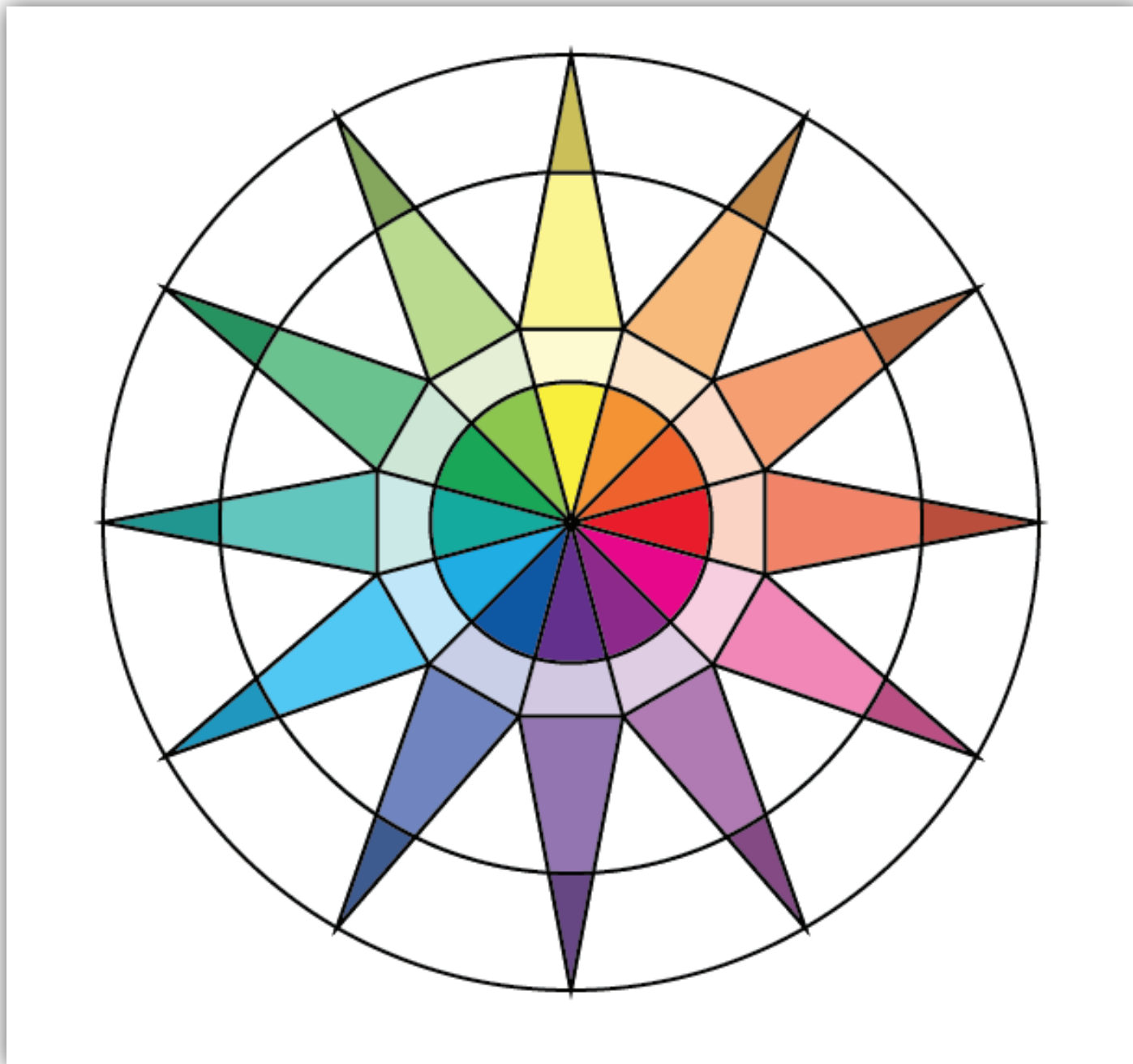
21. Your Swatch Panel should look like this now.



Color Wheel - Color Swatches - Part 3

Tints, Shades, Monochromatic, Analogous and Complementary..

22. Update your Color Wheel with the Tertiary tints and shades as shown below. Follow the steps in 12a, 12b and 12c. .



Don't forget to save your work regularly.

Color Wheel - Color Swatches - Part 3

Tints, Shades, Monochromatic, Analogous and Complementary..

22. Finish your Color Wheel by visually defining the following : Tints. Shades. Monochromatic. Analogous. Complementary. As illustrated below.

